



Rose Blossom Hair Comb

Written By: Project DIY

TOOLS:

- [flat pliers](#) (1)
- [glue applicator syringe](#) (1)
- [wire cutter](#) (1)

PARTS:

- [silver craft wire](#) (72 in.)
- [large silver hair comb](#) (1)
- [rose gold flower](#) (5)
- [Swarovski clear crystal](#) (6)
- [E6000 glue](#) (1)

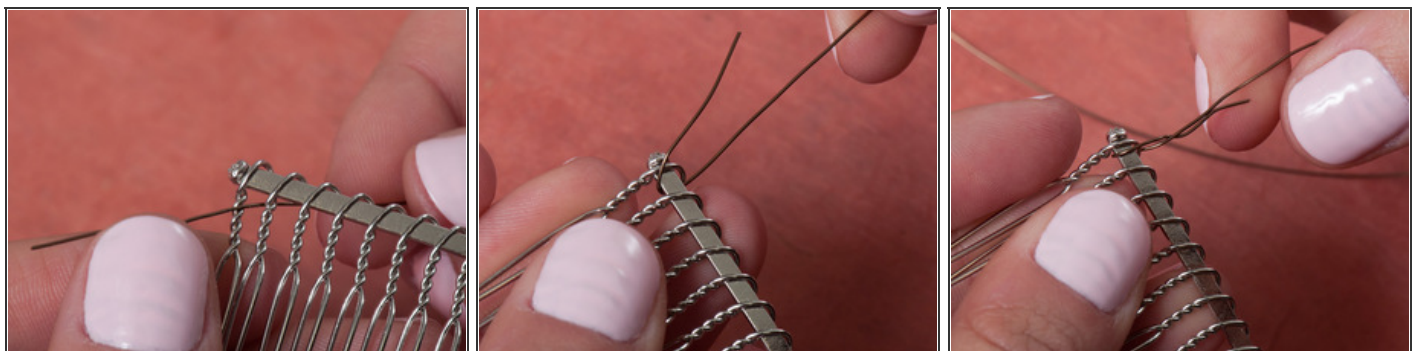
Step 1 — Rose Blossom Hair Comb



● STEPS 1 & 2: Gathering your materials and Preparing your flower charms for assembly

- Your kit should include 5 rose gold flower charms, a large wire hair comb, a length of wire and 6 Swarovski crystals. The project only requires 5 but we've given you an extra in case you lose or misplace one!
- In order to prepare your flower charms for attachment to the comb, gently grip the innermost petals with a flat plier, pushing them outwards toward the other petals.
- This will give you a larger space in the center of the flower, so that you can later insert the Swarovski stone into the center evenly.
 - Photo 3 shows before and after-- the right flower petals have been opened.

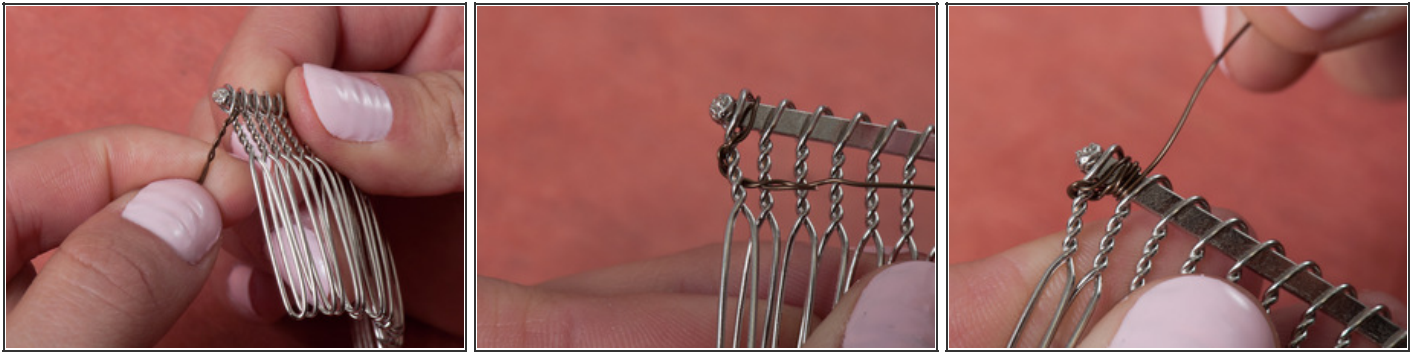
Step 2



● STEP 3: Securing the wire to your comb

- (Please note we are using a darker wire in the photos for clarity)
- Start by threading the wire in between the first two prongs on the comb.
- Bend the edge of the wire over the top of the comb and twist gently to close the loop.

Step 3



- Once you have twisted the wire gently, bring the twist to the left, over the first prong of the comb.
- Wrap it around to the back of the comb, and then pull it back in between the first and second prongs.
- Then, wrap a few times around the metal bar on the comb. This will keep the wire both attached and stabilized on the comb.

Step 4



● Wire Wrapping Your Flower Charms

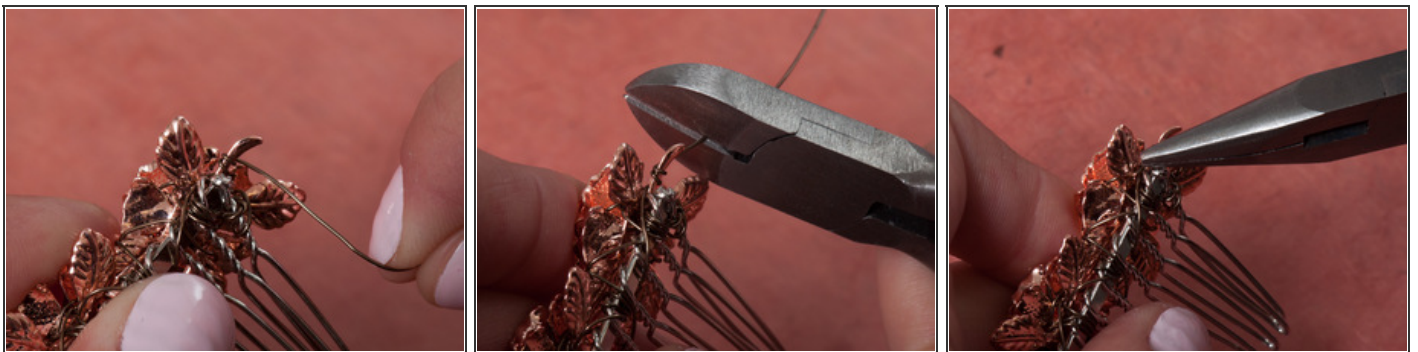
- Take the loose end of your wire and thread it through the back side of one flower charm.
- Pull the flower down the wire until it is flush with the comb. (Images 1-3)
- Find a space between two petals and pull the wire upwards so that it fits in between (Image 4)
- Bring the wire over the top of the flower, then around the comb bar in the back, and back through the prongs of the comb. You will be repeating this motion over and over as you continue to add the flowers. (Images 5-8)
- **TIP:** Do not thread the wire through the center of the flower more than once. This will create an uneven surface in the center and will cause difficulty when you adhere the stones.
- **TIP:** Be creative with your wire wrapping! Insert the wire in and around the petals, the leaves, etc. Make sure you pull it securely so that the flower doesn't wobble around.

Step 5



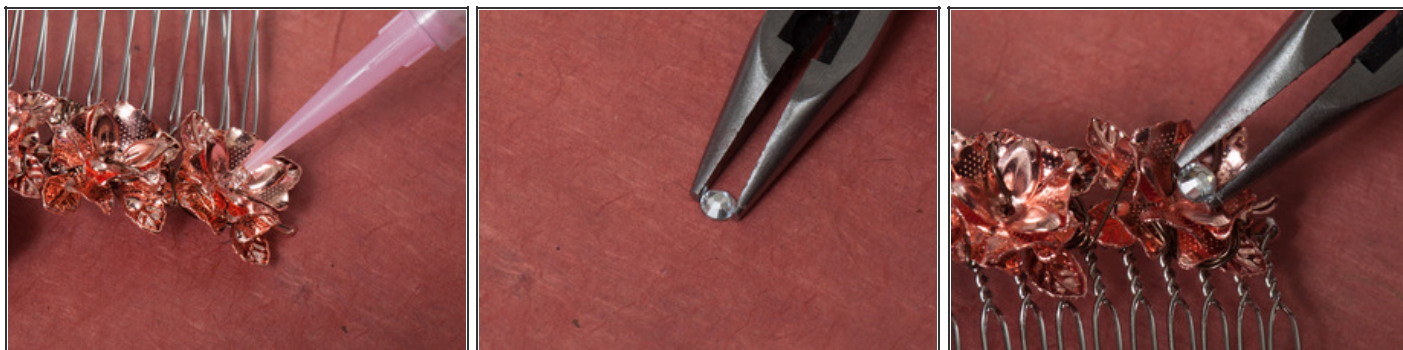
- Continue along the length of the comb, adding more flowers and wrapping them on securely.
- Once you reach the end of the comb, you can go backwards, wrapping the wire along the flowers to secure them or add decoration.

Step 6



- **Finishing the Wire Wrap**
- When you have completed your wire wrapping, you can simply snip the end of the wire off with a wire cutter, and use your flat pliers to bend the edge under one of the flowers.
- You can also use the stem of the flower as an anchor. Wrap the wire around it and then clip off any excess wire.
 - **TIP:** Use flat pliers to tuck the end of the wire towards the flowers, so that it doesn't scratch you when you wear it.

Step 7



● Adding the Swarovski Stones

- Add glue to the center of each flower using your Glue Applicator Syringe.
 - **TIP:** First time using the glue syringe? Check out our how-to guide [here](#)
- Use your pliers (or a pair of tweezers) to grip the stones, and place one in the center of each flower. Let the glue dry overnight before wearing.

Step 8



- Wear, Share and Enjoy! We would love to see how your comb came out. Share via FB or Instagram using **#mjprojectiy**

This document was last generated on 2014-05-16 06:21:44 AM.